

Product description

## Divider ZE-E

P\_2018\_1\_GB\_ZEE\_VZE



## Application

The ZE-E divider is used in the system area of PDI single line lubrication systems. Due to the dynamic functioning, the distributor can be used in systems where a rapidly metered and targeted drop is required (chains). The metering quantity (drops) is delivered during the pressure build-up.

## Product characteristics

- + Single-line divider system PDI
- + Oil
- + 1 outlet
- + Metered volumes 10 / 25 / 50 / 100 and 200 mm<sup>3</sup>
- + Dynamic divider



## Advantages

- + Precise metering
- + Installation at any position
- + No dripping
- + Free of wear
- + Optional for high temperatures

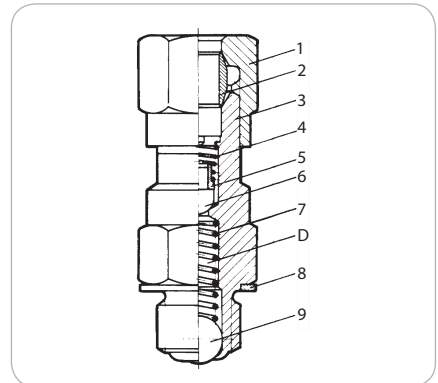
## Design and Function

The metering elements are fixed on the manifold. See details starting on page 3.

Each element is suitable for 4 mm dia. pipe connection.

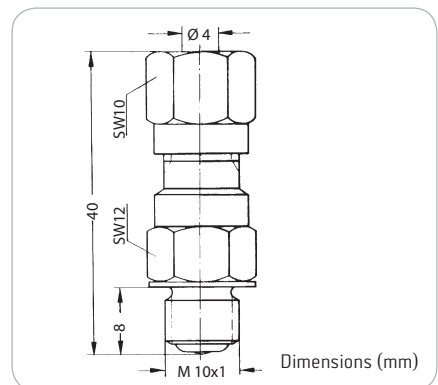
During the pressure stroke the ball (9) is lifted from its seat in the housing (3) and pushed up to the top against the spring force (7), and at the same time the non-return valve (5 and 6) is lifted against the spring pressure (4) thus discharging the lubricant to the greasing points.

When de-pressurizing the non-return valve (5 and 6) closes first. The relief valve of the pump maintains a residual pressure of 0.8 bar in the main line. Against this pressure the ball (9) is returned to its end position by spring (7). The lubricant which remains in front of the ball (9) is being returned to the chamber (D), ready for the next cycle. The time for re-charging the lubricant is mainly determined by the operational viscosity, discharge volume and other factors. The necessary interval between two cycles ranges from 0.13 to 30 sec.

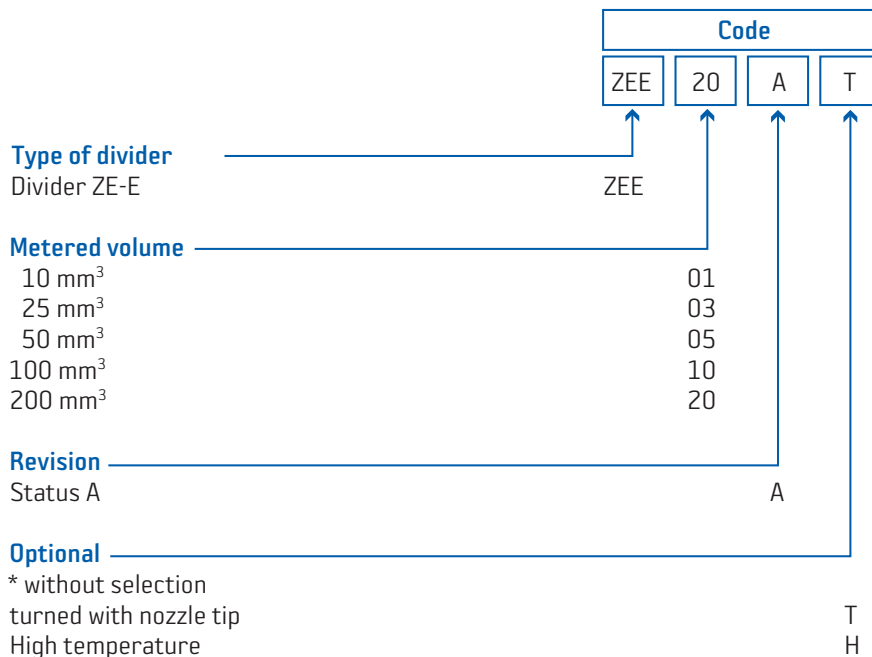


## Technical data

	Standard	High Temp
Metered volume (mm <sup>3</sup> )	10, 25, 50, 100, 200	
Temperature range	- 20°C to + 80°C	- 20°C to + 240°C
Operating pressure	10 to 30 bar	10 to 60 bar
Relief pressure max.	0.8 bar	1 bar
Material	steel zinc plated	
Suitable oils at operating temperature	30 to 2.000 mm <sup>2</sup> /s	30 to 750 mm <sup>2</sup> /s



## Coding / Example of order



\* leave filling field blank, if there is no need for selection.



## Accessories

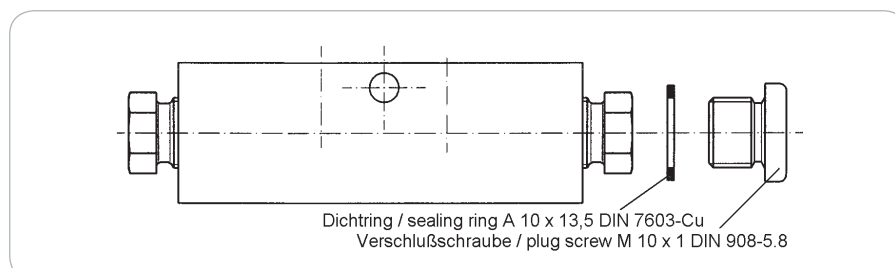
### Injector manifold VZ-E

#### Application

The VZ-E series manifolds are used to intake the ZE-E series dividers (standard and high temperature). The divider manifolds can be installed in series or parallel in the system and each have two inlet threads M10x1 to use double cone rings according DIN 3862. All manifolds are supplied with pre-assembled cap nuts and double conical rings.

#### Technical data

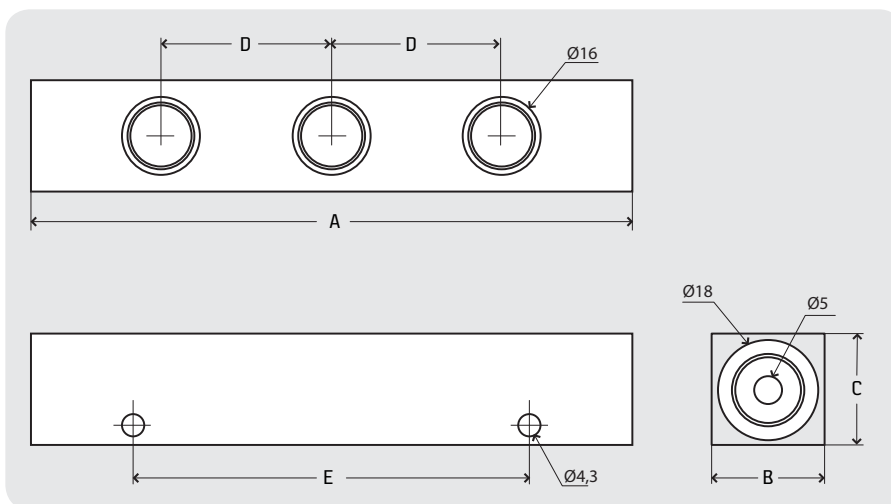
Thread inlet	M 10 x 1 / DIN 3862
Thread outlet	M 10 x 1
Material	steel zinc plated



## Item numbers and dimensions (mm)

Number of outlets	Thread inlet	Thread outlet	A	B	C	D	E	Article no.
2	M 10 x 1	M 10 x 1	57	16	20	18	13*	VZE01A02
3	M 10 x 1	M 10 x 1	75	16	20	18	18	VZE01A03
4	M 10 x 1	M 10 x 1	96	16	20	18	36	VZE01A04
5	M 10 x 1	M 10 x 1	111	16	20	18	54	VZE01A05
6	M 10 x 1	M 10 x 1	129	16	20	18	72	VZE01A06
8	M 10 x 1	M 10 x 1	165	16	20	18	108	VZE01A08
10	M 10 x 1	M 10 x 1	201	16	20	18	140	VZE01A10
12	M 10 x 1	M 10 x 1	237	16	20	18	180	VZE01A12

\* two fixing holes in the center and one above the other



## Nozzle pipes and screw fittings

Nozzle pipe length 150 mm	736542141
Nozzle pipe length 250 mm	735642151
Plug screw M 10 x 1	741061164
Plug screw M 10 x 1 with ventilation	741212141
Sealing ring DIN 7603 - A 10 x 13.5 - Cu	727121094

### DELIMON GMBH

(+49) 211 7774-0 TELEFON

(+49) 211 7774-210 FAX

[WWW.BIJURDELIMON.COM](http://WWW.BIJURDELIMON.COM)

Arminstraße 15  
40227 Düsseldorf