

PRODUCT INFO

PUMPMASTER 45



PUMPMASTER 45 - 25:1	PUMPMASTER 45 - 40:1	PUMPMASTER 45 - 70:1
Intensive Duty pressure transfer pump	Intensive Duty high flow pump	Intensive Duty high pressure pump
1 No reels - mobile units	4 or more	4 or more
75 m - 245'	125 m - 410'	175 m - 575'
Moderate pressure transfer Lube trucks Mining and construction In-plant	Heavy Duty service shops Fleets Lube trucks Mining and construction Railroad and mass transit vehicles In-plant Marine	Heavy Duty service shops Fleets Lube trucks Mining and construction Railroad and mass transit vehicles In-plant Marine

Maximum line length and number of simultaneous dispense points also depends on the line diameter, fluid viscosity and required delivery.



van der Gaag

J. van der Gaag B.V.
Goudstraat 30
NL-2718 RC Zoetermeer

T. +31 793601990
info@vdgaag.biz
www.vdgaag.biz

Moderate pressure, high delivery double acting pumps for transfer of grease up to NLGI-2. Also recommended for use with low viscosity grease in centralized grease systems that do not require a very high pressure output and in large distribution systems of high viscosity oils.

Pumps are available with tube length to fit commercial 185 kg - 400 lb drums and they are available for cover mount to 185 kg - 400 lb open drums using a drum cover 418 017.

FLUIDS HANDLED

- Grease up to NLGI-2
- High viscosity oil.

MARKETS SERVED

- Lube trucks.
- Mining and construction.
- In-plant.

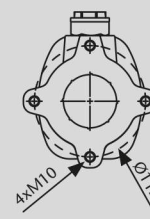
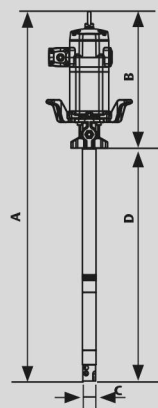
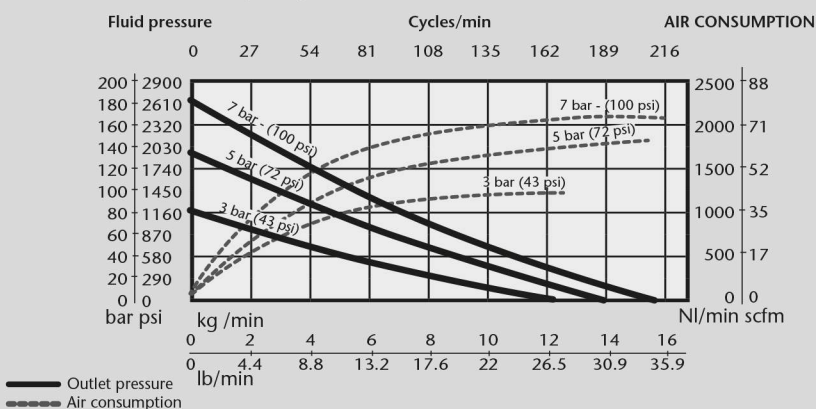


MODELS				
PART No.	APPLICATION	PUMP TUBE HEIGHT	TOTAL HEIGHT	WEIGHT
531 210	185 kg (400 lb) drum	855 mm	1,357 mm	24 kg

TECHNICAL DATA	
Pump pressure ratio	25:1
Continuous duty flow rate	6 kg/min (13.2 lb/min)
Maximum free flow	16 kg/min (35.3 lb/min)
Air pressure operating range	1.5 - 14 bar (20 - 200 psi)
Maximum outlet pressure	350 bar (5,000 psi)
Air motor effective diameter	115 mm (4.5")
Air motor stroke	100 mm (4")
Air consumption (1)	1,340 NI/min (47 cfm)
Air inlet	1/2" BSP (F)
Fluid outlet	1/2" BSP (F)
Wetted and seals materials	Cast Iron / Steel / Hard chromed steel / UHMWPE / NBR
Noise level (2)	80 dB

(1) Air consumption at 5 bar air pressure, NLGI-0 grease at 20 °C and 80 cpm.
 (2) Noise level measured at 1 m from the pump, 7 bar air pressure and free delivery.

NLGI-0, 21 °C (70 °F) CAPACITY



DIMENSIONS (mm)

MODEL	531 210
A	1.357
B	502
C	50
D	855

531 410

HEAVY-DUTY HIGH FLOW PUMPS

High flow double acting pumps with high pressure delivery for use in lubrication systems that require a combination of high flow and pressure delivery. Pumps can be used with grease up to NLGI-2 viscosity. These pumps can be used in medium length systems that include simultaneous operation outlets.

Pumps are available for cover mount to 50 kg - 120 lb and 185 kg - 400 lb open drums and for horizontal and side mount on grease totes and bags.



FLUIDS HANDLED

- Grease up to NLGI-2.

MARKETS SERVED

- Heavy-Duty service shops.
- Fleets.
- Mining and construction.
- Railroad and mass transit.
- In-plant.
- Marine.

MODELS

PART NO.	APPLICATION	PUMP TUBE HEIGHT	TOTAL HEIGHT	WEIGHT
531 410	185 kg (400 lb) drum	855 mm	1,357 mm	25 kg
531 420	50 kg (120 lb) drum	650 mm	1,152 mm	22 kg
531 430*	Bulk tote	490 mm	992 mm	26 kg

* Includes adaptor 753 110 to fit a 3" cam-lock connector for use in totes and grease bags.

TECHNICAL DATA

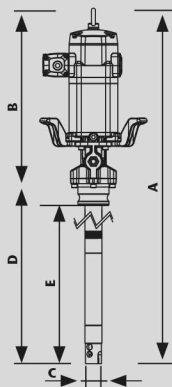
Pump pressure ratio	40:1
Continuous duty flow rate	3.5 kg/min (7.5 lb/min)
Maximum free flow	11 kg/min (24.3 lb/min)
Air pressure operating range	1.5 - 14 bar (20 - 200 psi)
Maximum outlet pressure	560 bar (8,000 psi)
Air motor effective diameter	115 mm (4.5")
Air motor stroke	100 mm (4")
Air consumption (1)	750 NI/min (26.5 cfm)
Air inlet	1/2" BSP (F)
Fluid outlet	1/2" BSP (F)
Wetted and seals materials	Cast Iron / Steel / Hard chromed steel / UHMW PE / NBR / PTFE
Noise level (2)	80 dB

(1) Air consumption at 5 bar air pressure, NLGI-2 grease at 20 °C and 80 cpm.

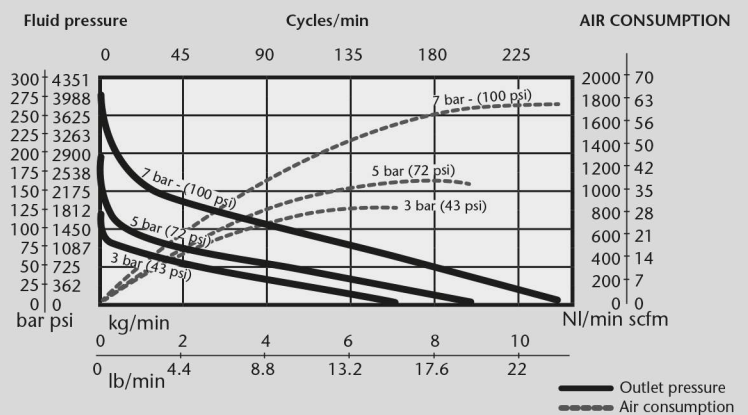
(2) Noise level measured at 1 m from the pump, 7 bar air pressure and free delivery.

DIMENSIONS (mm)

MODEL	531 410	531 420	531 430*
A	1,357	1,152	992
B	502	502	502
C	50	50	50
D	855	650	490
E	-	-	410



NLGI-2, 21 °C (70 °F) CAPACITY



High pressure double acting pump for use in applications that require extra pressure output or when cold temperatures a low air pressure could limit pump performance. Pumps can be used with grease up to NLGI-2 viscosity. These pumps can be used in large distribution systems that include simultaneous operation outlets.

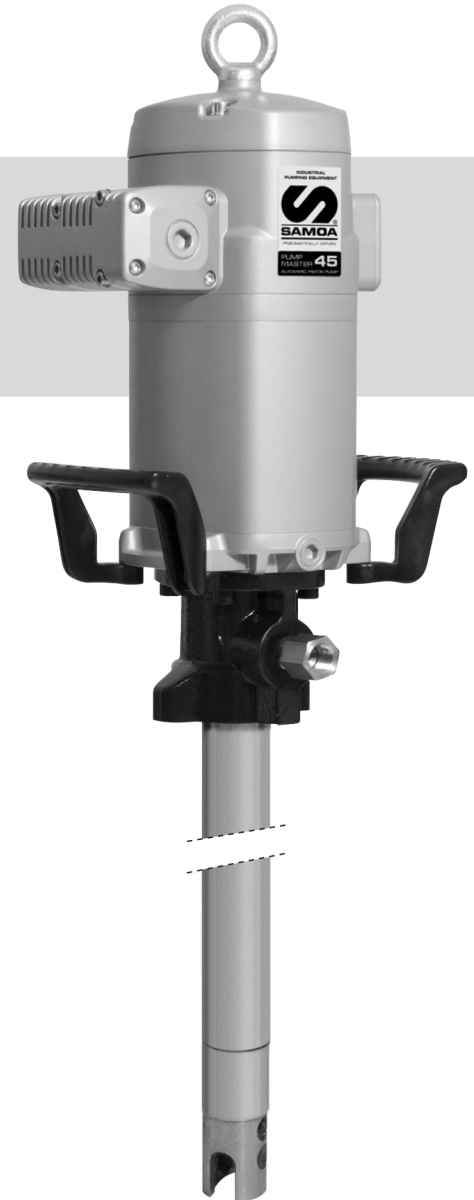
Pumps are available for cover mount to 50 kg - 120 lb and 185 kg - 400 lb open drum and for horizontal and side mount on grease totes and bags.

FLUIDS HANDLED

- Grease up to NLGI-2.

MARKETS SERVED

- Heavy-Duty service shops.
- Fleets.
- Lube trucks.
- Mining and construction.
- Rail road and mass transit.
- In-plant.
- Marine.



MODELS				
PART NO.	APPLICATION	PUMP TUBE HEIGHT	TOTAL HEIGHT	WEIGHT
531 710	185 kg (400 lb) drum	855 mm	1,357 mm	25 kg
531 720	50 kg (120 lb) drum	650 mm	1,152 mm	22 kg
531 730*	Bulk tote	490 mm	992 mm	21 kg

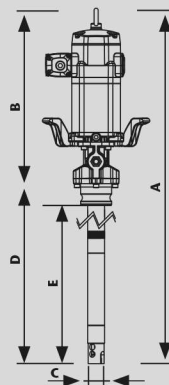
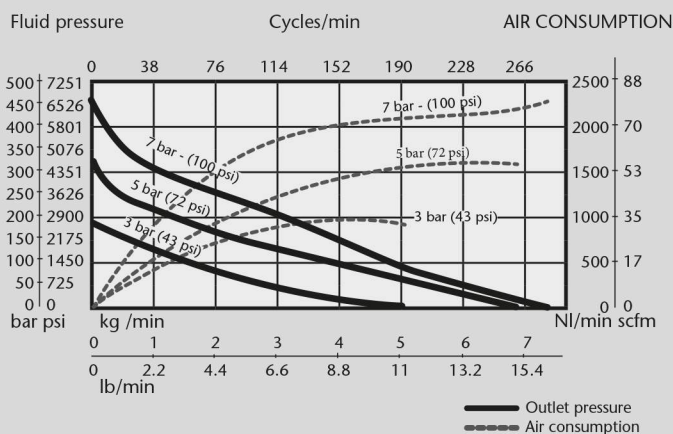
* Includes adaptor 753 110 to fit a 3" cam-lock connector for use in totes and grease bags.

TECHNICAL DATA	
Pump pressure ratio	70:1
Continuous duty flow rate	2 kg/min (4.5 lb/min)
Maximum free flow	7.5 kg/min (16.5 lb/min)
Air pressure operating range	1.5 - 7 bar (20 - 100 psi)
Maximum outlet pressure	490 bar (7,000 psi)
Air motor effective diameter	115 mm (4.5")
Air motor stroke	100 mm (4")
Air consumption ⁽¹⁾	925 NI/min (32.6 cfm)
Air inlet	1/2" BSP (F)
Fluid outlet	1/2" BSP (F)
Wetted and seals materials	Cast Iron / Steel / Hard chromed steel / UHMW/PE / NBR / PTFE
Noise level ⁽²⁾	80 dB

(1) Air consumption at 5 bar air pressure, NLGI-2 grease at 20 °C and and 80 cpm.

(2) Noise level measured at 1 m from the pump, 7 bar air pressure and free delivery.

NLGI-2, 21 °C (70 °F) CAPACITY



DIMENSIONS (mm)			
MODEL	531 710	531 720	531 730*
A	1,357	1,152	992
B	502	502	502
C	50	50	50
D	855	650	490
E	-	-	410

